

Standard Operating Procedure Snow Removal and Ice Control Town of Amherst

No: 01-002

December 15, 2008

Governing Laws RSA 41:11, RSA 47:17, RSA 231:92-a, and RSA 507-B:2-b

Approved Date December 17, 2008

Next Review date December 1, 2010

Policy: It is the goal and intent of the Town of Amherst to provide timely, efficient, and cost-effective winter maintenance, snow removal, and ice control on the roadways of the municipality for the safety and benefit of the town's residents and the general motoring public.

Procedure: The objective stated above will be achieved by implementation and execution of the procedures and tasks outlined in the Town of Amherst **Winter Operations Snow Removal and Ice Control Procedures**. Due to the many variables that are inherent in New England weather, each storm and / or weather event may require slightly different effort and / or emphasis on any number of maintenance tasks, which together, determine the overall winter maintenance, snow removal or ice control strategy.

Level of Service: It is not possible to maintain a snow and ice-free black road or sidewalk during a storm. It is the intention of the Town of Amherst to provide practical, safe access to homes, business and municipal facilities during winter storms.

It is our policy to start snow removal operations upon accumulation of two inches of snowfall. The Public Works Director or his designee may, at his discretion based upon weather information reports, elect to not remove snow until greater or lesser accumulations.

Pre-treatment and ice control may be addressed prior to the actual snow beginning, during the actual storms as seen effective, and proceeding the storm. It should be noted that salt has a much slower effect on melting snow and ice at temperatures below 25 degrees, and may not be applied until it is warmer.

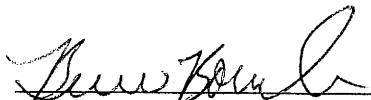
Sidewalk snow clearance will be conducted as soon as possible during winter storms. Personnel availability and the needs to maintain roadways will take priority.

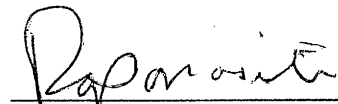
Command: direction of all winter maintenance activities for the Town of Amherst is vested with the Director of Public Works, the Lead Foreman, or their designee.

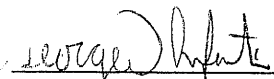
Execution: The policy outlined above is intended to serve as the normal operation procedures for winter maintenance, snow removal and / or ice control for the Town of Amherst. One or more of the following, which may delay or prevent the implementation of this policy, may affect all or any part of this policy

1. Equipment Breakdown
2. Snow accumulation in Excess of 1" per hour
3. Traffic Congestion
4. Emergencies
5. Personnel illness
6. Extensively long drawn out storm, with an exhausted crew.

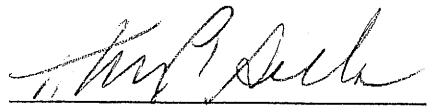
Adoption: The Town of Amherst has adopted the Winter Operations Snow Removal and Ice Control Policy effective December 3, 2001. All residents are encouraged to familiarize themselves with the content as it describes the condition that one might expect to encounter before, during and following a winter storm event.

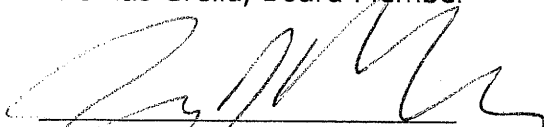

Bruce Bowler, Chairman
Board of Selectmen


Reed Panasiti, Board Member


George Infantj, Vice Chairman
Board of Selectman


Brad Galinson, Board Member


Thomas Grella, Board Member


Gary MacGuire, Town Administrator

Mailbox Standard Policy Town of Amherst

No: 03-001

December 1, 2005

Governing Laws, RSA 41:11, RSA 47:17, RSA 236:15, RSA 236:16, & P.O. Form 4056

Approved Date December 5, 2005

Next Review Date December 2008

Postal bulletin 22102 recommends using a semi-arch or extended arm-type support, which allows snowplows to sweep near or under mailboxes without damaging supports, and provides easy access to the mailboxes by carriers and customers.

Postal bulletin 22102 states the Postal Service does not regulate mailbox supports in any way except for purposes of carrier safety and delivery efficiency. Posts and other supports for curbside mailboxes are owned and controlled by the customer, who are responsible for ensuring that posts are neat and adequate in strength and size.

The Federal Highway Administration (FHWA) has determined that mailbox supports no larger than four inches by four inches, or a two-inch diameter standard steel or aluminum pipe, buried no more than twenty-four inches, should safely break away if struck by a vehicle. According to FHWA, the mailbox must also be securely attached to its post to prevent separation if struck..

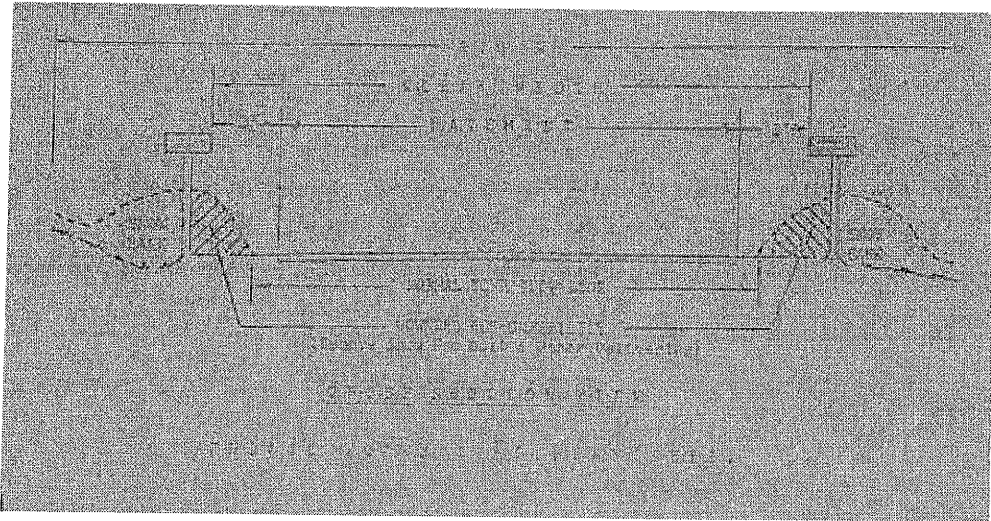
Under federal law, all highways maintained by state and local governments have been declared, "post roads" thus, placement of mailboxes within state and local right-of-ways is permissible under federal law. However, municipalities have the legal right to regulate the actual placement.


Policy: Mail and Newspaper boxes are allowed, at the owners risk within the town's right-of-way for purposes of convenience. Claims of damages resulting from their installation are the responsibility of the owner. The following are suggestions for reducing the possibility of damage:

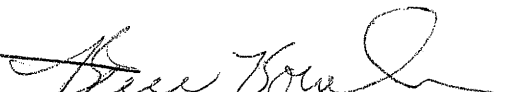
- Wherever possible, mailboxes should be installed at least 3 feet from the edge of pavement and bottom edge of the box no less than 41 inches or more than 45 inches from the ground surface. Most Amherst roads are twenty feet wide with two to four foot maintained shoulders. The traveling terrain must allow easy access to mail carriers.


- Installation should be sufficiently sturdy to withstand the weight of heavy snow resulting from plowing operations.

Execution: The policy listed above is designed and intended to minimize damage to personal property resulting from winter maintenance.




Marilyn Peterman, Chairman


Bruce Bowler, Board Member


John Dinkle Jr., Board Member

George Infanti, Board Member

Tom Grella, Board Member